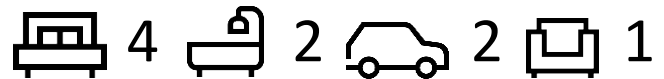


Contemporary 3 Facade*

PAYLING



Contemporary 1 or 2

**TURN KEY
FIXED PRICE:** **\$673,800**

Elevate Lot 93 (325m²)

HOUSE PRICE: \$306,800

HOUSE SIZE: 165.96m²

LAND PRICE: \$367,000

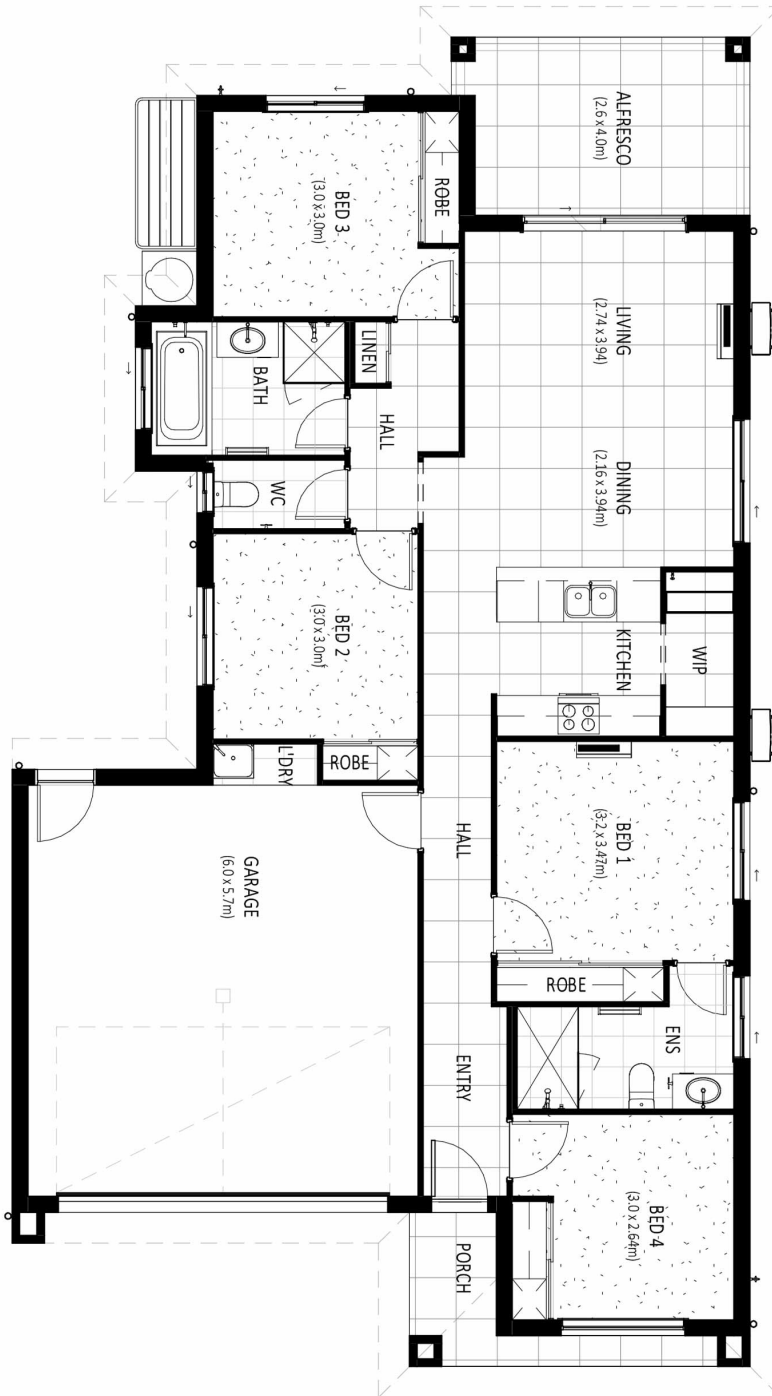
REGISTRATION: Est. 01/22

KEY INCLUSIONS

- 900mm Appliance Pack
- CCTV Camera Alarm System
- 2590mm Ceilings
- Keyless Entry
- 2 x Split System A/C
- 20mm Stone Benchtops
- Full Landscaping
- Fixed Price, Nothing More To Pay

*Artist impression only, all inclusions are as per Specifications of Works. Correct as of 23/12/2021

PAYLING



*Artist impression only, all inclusions are as per Specifications of Works. Correct as of 23/12/2021